

NITECORE®

EDC07



ULTRA SLIM & LIGHTWEIGHT

HIGH CRI THREE COLOR TEMPERATURES
EDC FLASHLIGHT



Variable CRI Multiple Color Temperatures



1500 Lumens

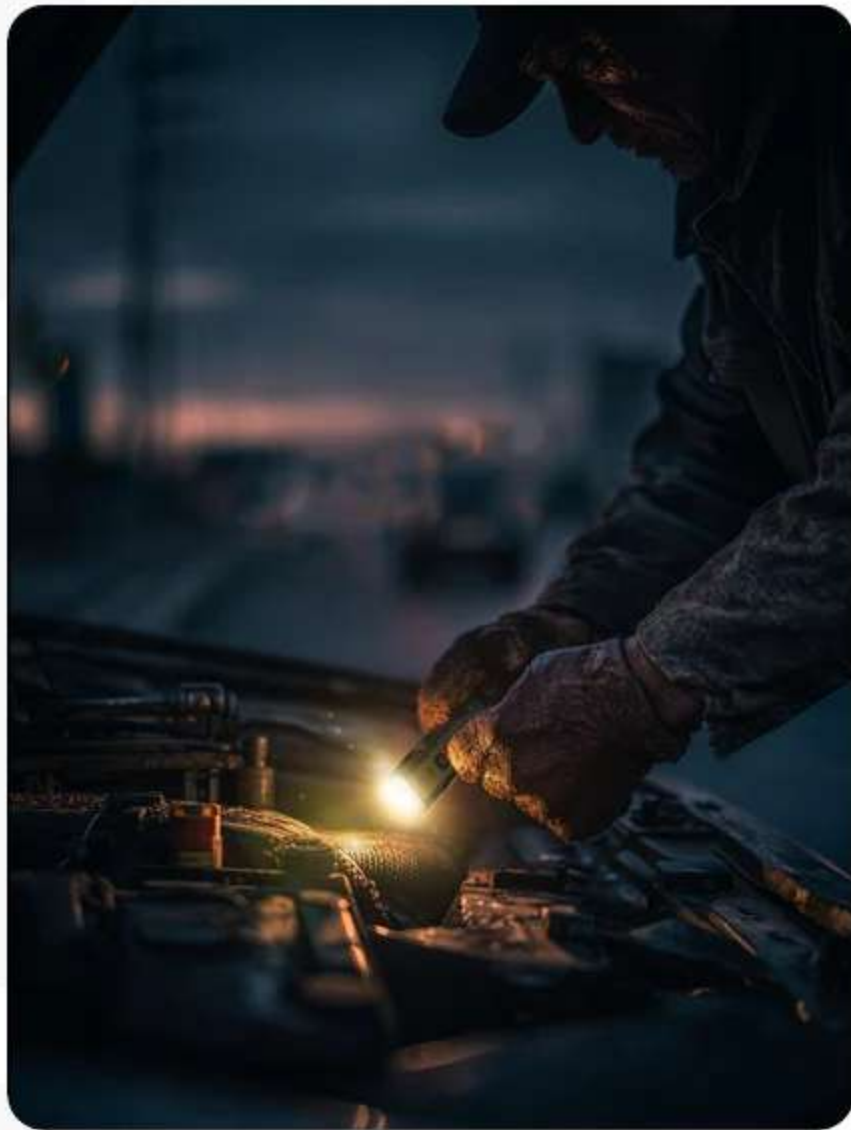


132 Meters



70g / 2.47 oz

*These images are for guide purpose only and the actual result may vary depending on ambient factors.
They are the intellectual property of NITECORE. All rights to take legal action are reserved.



70g / 2.47 oz

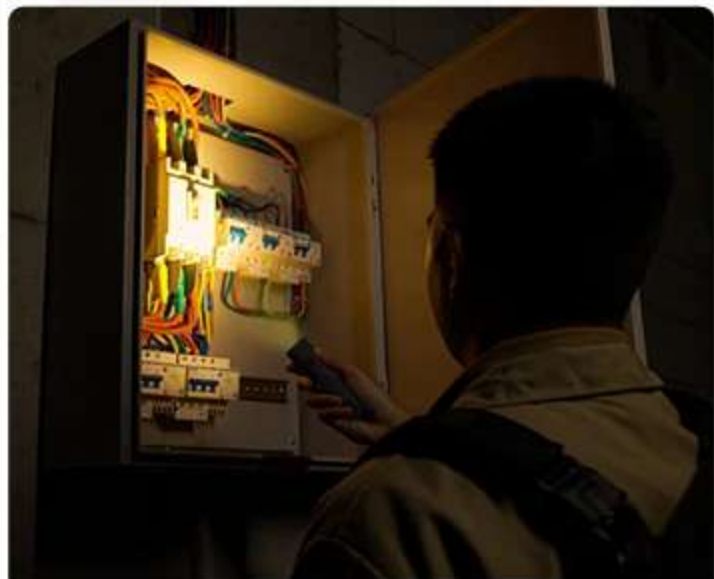
Ultra Lightweight

The lightweight design reduces hand fatigue, allowing for comfortable extended use, especially during long tasks such as inspections and inventory checks.

(EDC07≈ 3 x AA Batteries)

* Weight excludes accessories.

Ready for Every Scenario



CRI 97

3000K Warm Light

Ensuring accurate acquisition of real-world object details

- ✓ Rain / Fog / Smoke
- ✓ Line / Label Inspection
- ✓ Plant / Crop Observation



CRI 83

4500K Neutral White Light

Natural and soft, perfect for extended work and daily use

- ✓ Versatile Applications
- ✓ Emergency Lighting
- ✓ Low-light Work



CRI 73

6500K Cool White Light

Suitable for high-output, long-range lighting applications

- ✓ Night Patrol
- ✓ Camp Lighting
- ✓ Outdoor Exploration



Variable CRI Multiple Color Temperatures LED

(Patent Pending)



HIGH-EFFICIENCY CORE

HIGH-CRI CORE

Featuring 2 quad-core MCT UHE LEDs and dual TIR optical lenses, the EDC07 offers multiple color temperatures and CRI options, high illumination efficiency, and a soft, uniform beam. It faithfully renders the true-to-life colors of objects and provides adaptable lighting for various scenarios.

* CRI (Color Rendering Index) is a value from 0 to 100 that measures the ability of a light source to accurately reveal the colors of objects.

All-Rounder for Every Task





Slim & Portable

Dimensions: 120mm x 31mm x 17mm / 4.72" x 1.22" x 0.67"

The high-performance PC housing helps prevent other items from being scratched during storage.



The included deep carry pocket clip fits snugly in a pocket or bag, or on a belt, leaving less of the flashlight protruding.

Mech-inspired Design

A bold look with stylish anti-slip textures, blending industrial aesthetics with practicality

Classic Black



Desert Tan



**1500
Lumens**

Full control, near or far



Reaches

132 Meters

Press to Switch

M Button: Color Temperature Switching /
Brightness Level Adjusting

M Button + Tail Button: ULTRALOW / STROBE / SOS



Press to Light

Tail Button: On / Off

3 Color Temperatures

Each with 5 Brightness Levels & 2 Special Modes

Seamless switching for any task, from close-up work to long-range search



TURBO



HIGH



MID



LOW



ULTRALOW

Randomly Changing STROBE

The STROBE mode randomly varies between 16Hz and 20Hz, effectively warning, deterring, and repelling potential threats.



SOS

An internationally recognized distress signal that helps rescuers locate you faster during power outages or emergency situations.



Tail Stand Function Hands-free Operation

Enables more efficient use while preventing accidental activation for safer carrying



USB-C Rechargeable Uninterrupted Lighting

With a built-in 1,500mAh Li-ion battery and a USB-C port, the EDC07 provides up to 360 hours of lighting at the 1-lumen ULTRALOW level and supports simultaneous charging and use – no more battery anxiety.



Power Indication

Flashing: Charging

Solid: Fully Charged

Intuitive Display

●●●●	4 Constant-on	75% – 100%
●●●	3 Constant-on	50% – 75%
●●	2 Constant-on	25% – 50%
●	1 Constant-on	10% – 25%
⚡	1 Flashing	<10% <small>(Please recharge the product as soon as possible.)</small>





IP67 Waterproof 2m Impact Resistance

Provides stable lighting even in dusty or rainy conditions,
or after accidental drops, ensuring work efficiency